



PBS5

Enterprise Asset Management System



Content

Introduction	1
Industry Sector.....	2
Industry Sector Overview	3
Fixed Asset/Plant Management	4
Mine and Utilities Management.....	5
Fleet and Mobile Plant Management	6
Service Management	7
I.T. Assets Management	8
Public Facilities and Infrastructure Management	9
PBS5 Modules	10
Translingual	11
HyperGraphica	12
Asset Management	13
Asset Condition & Engineering Assessment Reporting	13
MS Project Interface	13
Work Request Processing and Authorization	14
Production Reporting	16
Hierarchical Business Structure	17
Work Management	18
Programmed Maintenance	19
Risk, Safety and Hazard Management	20
Incidents	21
Document Management	22
Skills and Training Management	22
Matter and Workflow Management	22
Inventory	23
Purchasing	24
Legacy Application Re-engineering & Customisation.....	25
Infrastructure	26
Environment	27
General	28
Summary	28

Introduction

PBS5 EAM/ERP is a highly configurable, language independent, enterprise asset strategic management solution that has special capabilities for global enterprises.

PBS5 can be extended to work with any business. A unique generated code framework (requires only business level capability) is user role centric, generates standardized windows which is integrated with HyperGraphica (a graphical asset register).

PBS5 maximizes business returns within a risk and quality managed matrix.

PBS5 TransLingual™ breaks down the barriers of language. PBS5 TransLingual is more than multi-lingual as it allows data and labels to be converted into any language required for the business. PBS5 TransLingual™ simplifies training, administration and reporting across international sites.

PBS5 HyperGraphica® is a visually driven interface that lowers training and assures data accuracy. Large enterprises can identify assets and work across sites without reliance on complex naming conventions - users point and click on the instantly recognizable visually represented asset. HyperGraphica can equally be used to build graphical parts books, for machinery assemblies, or fleet items.

PBS5 TransLingual™ and **PBS5 HyperGraphica®** are specifically designed for multi-national or joint venture organizations, helping to bring your enterprise closer together.

Your Industry is Our Priority

Paradigm Designs Software can help you with meeting the unique needs of your particular industry.

Industries Sectors Overview.....	3
Fixed Asset/Plant Management	4
Mine and Utilities Management.....	5
Fleet and Mobile Plant Management	6
Service Management	7
I.T. Assets Management	8
Public Facilities and Infrastructure Management	9





Industry Sectors Overview

Industry Sectors served by PBS5 include:

Fixed Asset/Plant Maintenance

- General Discrete Manufacturers
- Chemical and Petro-chemical Process plants
- Pulp and Paper
- Maintenance Service Providers

Mine and Utilities

- Mining Resources and Mineral Processing
- Utilities

Fleet and Mobile Plant Management

- Car and Truck Fleet Operators
- Police Departments
- Local Government vehicles
- Equipment hire Firms
- Fleet service providers

Service management

- Maintenance Service providers
- Global project and works management
- Global consulting

IT Assets

- IT departments
- Help desk or customer support managers
- Repair shops

Public Facilities and Infrastructure Management

- Hospitals
- Port Authorities
- Public Sector
- Local Government/Councils

Fixed Asset/Plant Maintenance

Important modules:

Asset Management
Work Request Processing
Work Management
Preventative Maintenance
Risk and Safety
Incident Management
Documents
Condition Assessment
HyperGraphica®

Points of value for owners of fixed plant using PBS5:

- Improved productive asset utilization through reduced downtime. This means less capital expenditure to produce the same output, providing competitive cost advantage in manufacture.
- Improve Operational reliability allows tighter production planning, less missed deadlines, and better servicing of customers, with less requirement for buffer stock and warehouse reserves to cover production uncertainty.
- General cost reduction through better asset life cycle management decisions.
- Identification and understanding of business critical assets.
- Improved decision support, through information collated as an asset/ inventory, or work practice level.
- Development of a root cause understanding of unreliability, and utilization losses.
- Centralization of important information. Consolidation of information often held disparately throughout the organization. For example: documents, spreadsheets, mini apps, etc.
- Demonstrable Statutory and Environmental Compliance.
- Demonstrable systems, and workflows facilitating Quality certification.
- Integrated and centralized risk control and safety systems.
- Risk, or criticality based work prioritization, and escalation.
- Configurable notification, and escalation workflows, giving more business control.
- Business efficiency through better maintenance resource planning and management.
- Cost reductions in better inventory and spares control.
- Able to generate performance figures to compare with industry benchmarks and best practices.

PBS5 Mine & Utilities Management

Important modules:

Production Reporting
Work Management
Risk, and Safety
Incident Management
Asset Management
Document
Spares and Inventory
Stores and Purchasing
Condition Assessment

Points of value for owners and operators of mines and utilities using PBS5.

- Control and better understanding of losses and yields-greater understanding of production, and production constraints from an asset, and root cause perspective.
- Centralization of important decision support information to make better asset centric management decisions, including identification of costly, unreliable, or poorly performing assets, from a repair, operating efficiency, and risk basis.
- Standardization of work practices.
- Better control of work practices, yielding efficiency and better safety and risk control outcomes.
- Demonstrable Statutory and Environmental Compliance.
- Integrated, and centralized risk control and safety systems.
- Business efficiency through better maintenance resource planning and management .
- Cost reductions in better inventory and spares control.
- Cost reduction through better asset life cycle management decisions.
- Able to generate performance figures to compare with industry benchmarks and best practices.





PBS5 Fleet & Mobile Plant Management

Important modules:

Asset Management

Preventative Maintenance

Work Management

Incident Management

Documents

Condition Assessment

Asset templates

Points of value for owners and operators of fleets using PBS5:

- Managed maintenance means increased vehicle reliability and service life.
- Create Templates of Assets of the same Make and Model, which includes full specifications, work and maintenance plans etc.
- Ability to make whole cost of ownership decisions about fleet ownership.
- Compare performance of makes, models, and drivers.
- Provide statutory compliance with safety and other regulations.
- Track warranties, and improve warranty recovery rate.
- Centralize information for ease of administration.
- Track rotatable kits or toolboxes which may be allocated to different vehicles.
- Manage repair requests.



PBS5 Service Management

Important modules:

Work Management

Programmed Maintenance

Work Scheduling

Asset Management

Risk and Safety

Incident Management

Documents

Condition and Engineering Assessment Reporting

Points of value for Service providers:

- Centralize work and client job management globally.
- Operate language independently.
- Analysis, compare performance and job profitability on a global basis.
- Provide safety and risk management control centrally to work crews and consultants operating across sites globally.
- Centralize information for ease of administration.
- Track rotatable kits, tools, or critical equipment globally.
- Manage repair requests.

I.T. Asset Management

Important modules:

Asset Management
Work Request Processing
Work Management
License compliance
Preventative Maintenance
Documents
Purchasing
Inventory
Warranty Tracking
Data Cards

Points of value for businesses, or government bodies managing computer hardware, software, service personnel and general IT assets using PBS5.

- Tracking of Location of IT assets.
- Able to assemble, disassemble and reconfigure computers and hardware, and keep track of its users, configuration information etc.
- Manage service requests.
- Manages "Rotable", and consumable inventory
- Track location history as hardware components are moved around organizations
- Track items off site, under repair etc.
- Identify Warranty and Suppliers of specific Items.
- Generation of Bar codes, and asset identification numbers.
- Generate depreciation schedules.
- Manage procurement, suppliers and contracts.
- Lease expiry notification.
- Integrated Help desk allows faults, or work requests to be recorded, tracked, actioned, costed, and escalated as required.

Public Facilities, Local Government and Infrastructure

Important modules:

Asset Management
Work Request Processing
Work Management
Preventative Maintenance
Risk and Safety
Incident Management
Documents
Skills and Training
Inventory
Data Cards

Points of value for governments, councils, port authorities, and others responsible for public assets using PBS5:

- Improved condition of public and highly visible assets through better maintenance.
- Centralize requests for maintenance or service.
- Track progress of maintenance requests.
- Increased accuracy for forward budgeting requirements from impending preventative maintenance to civil, mechanical, and property assets.
- Track depreciation of assets.
- Improve public safety and demonstrate risk control.
- Provide litigation support against claims of inaction, or neglect of public assets.
- Manage purchasing, preferred supplier management.
- Improved expenditure control.
- Cost analysis of asset life cycles.
- Enhanced reporting, & perception of accountability through centralized data.
- Improved customer satisfaction levels.
- Ability to develop and operate maintenance strategies based on Risk.
- Manage statutory requirements for Safety & Environmental incidents.
- Management of work or service requests, with feedback to original requester.
- Notification escalation, can be configured into any aspect of the work request workflow.
- Better resource utilization and planning.
- Skills compliance, and expiry notification.
- Improved management of spares inventory, opportunity to share stores and stock.
- Opportunity to run demand driven inventory management, reducing parts holding.
- Management Training.

Modules

TransLingual.....	11
HyperGraphica.....	12
Asset Management	13
Asset Condition & Engineering Assessment Reporting	13
Work Request Processing & Authorization	14
MS Project Interface	14
Production Reporting	15
Hierarchical Business Structure	15
Work Management	16
Programmed Maintenance	17
Risk, Safety and Hazard Management	17
Incidents	18
Document Management	19
Skills and Training Management	19
Work Management	16
Inventory	20
Purchasing	20
Matter and Workflow Management	20

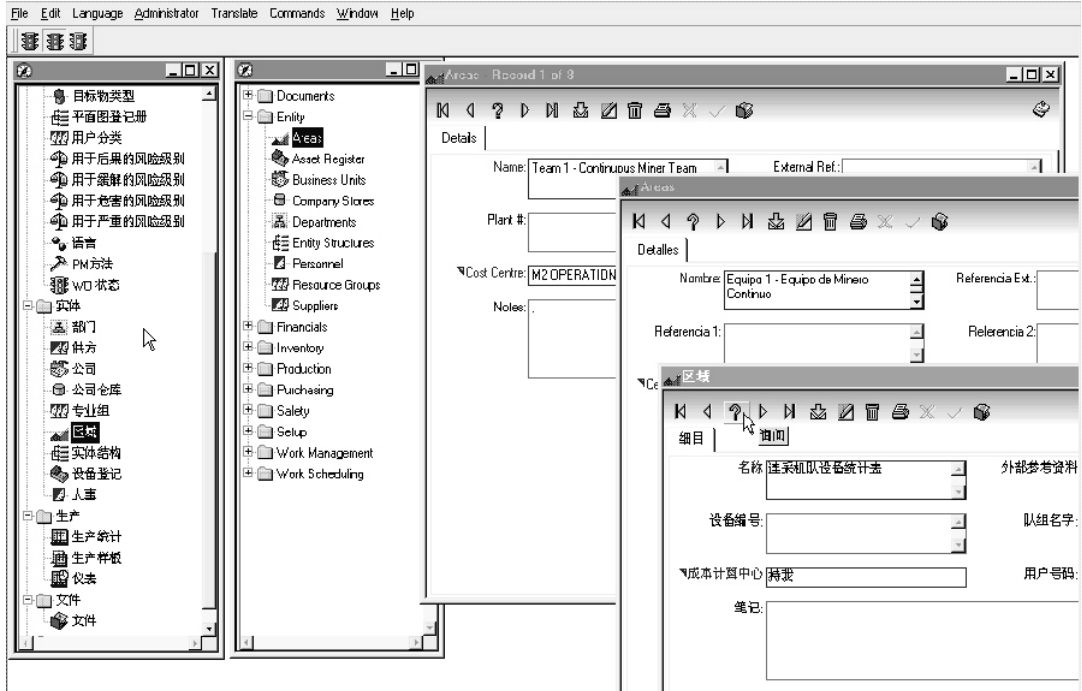


PBS5 TransLingual™

PBS5 TransLingual™ option displays data in many languages simultaneously – each PBS5 user views data in their native language. Enterprises will lower administration, translation, training costs and centralize data.

PBS5 TransLingual creates the opportunity for multi-national companies to establish international KPIs assuring global management control and standards.

- PBS5 is language independent designed for multi-lingual corporations.
- Infinite simultaneous languages – each user views data and screens in their language.
- Configurable language settings, labels and data.
- Dynamic translation of windows.
- Supports European and Asiatic languages, including former Soviet Union Cyrillic characters.



The limits of my language
mean the limits of my world.”
Ludwig Wittgenstein

PBS5 HyperGraphica®

HyperGraphica® - lowers training and assures data accuracy. Large enterprises can identify assets and work across sites without complex naming conventions - users point and click on the instantly recognizable visual asset.

- HyperGraphica® makes PBS5 Visually Driven.
- HyperGraphica® has proven to be a critical success factor in many of our implementations.
- Allows geographical and/or spatial visual representation and selection of assets and data.
- Allows graphical Iparts and assembly catalogues.
- Integrated drawing and editing tool.
- Supports virtually any graphical type, such as, AutoCAD, bitmaps and so on.

PBS5 HyperGraphica® is a visual graphical portal to PBS5s' modules.

Asset Management

- PBS5 allows a hierarchical asset register to be constructed as a model of your organization.
- Any number of different hierarchies is supported to reflect different needs.
- All information regarding any asset can be stored in data, or as attached documents.
- Bills of materials for asset spare parts.
- Supports Rotable assets.
- Keeps Rotable history.
- Keeps asset movement history.
- Log financial details.
- Default suppliers.
- Track depreciation.
- Data cards.

Asset Condition and Engineering Assessment Reporting

- Condition assessments can be logged and archived.
- Condition assessments can be single or multiple parameter.
- Condition parameters can be qualitative, or quantitative.
- Log and archive findings, recommendations, condition status, pictures, etc.
- Links to work requests and documents.
- Multi Parameter Asset condition definitions.
- HyperGraphica® visual color coding of condition status.
- Consolidate findings from vibration, thermography, oil sampling, inspection etc.

MS Project Interface

- Query driven live data acquisition.
- Exports/imports in a number of formats.
- Project is configured with the same lookups & constraints as PBS5.
- Live data update from MS Project.
- Data isolation repository is created for each planner.
- Data can be dealt with from multiple planners at the same time with no effect on the system.

Work Request Processing and Authorization

- Can be connected to any entity type.
- Departmental allocation – safety, quality etc.
- Request to work order conversion, with programmable approval and escalation.
- Work Request notification.
- Approval history.
- Work Request to Work Order audit tracking.
- Email interface for criticality, or hazard escalation and approval.
- Service request queue prioritisation management.
- Document linking.

Production Reporting

- Production meters to n levels.
- Parent child production meters.
- Complete transaction history.
- Rollover functions to n levels.
- Multi-meter conversions for each meter.
- Hierarchical meters.
- Custom shift configuration.
- Custom measurement configuration.
- Multi-conversions for each production input.
- Document linking.
- Production and other delays including, reason code, equipment or entity, responsibility, type and duration.

Hierarchical Business Structure

- Multi-hierarchies.
- All entity types can be included in hierarchy.
- N levels of structure.
- N levels of BOM (Bill Of Materials).
- Movement history.
- Rotable history.
- Links with HyperGraphica®.
- Links to windows (privilege enabled).
- Multiple move for all types of entities.
- Organizational hierarchies enables authorization and approval.
- Document linking.

Work Management

- Can be connected to any entity type.
- Can support any type of business work orders, internal activity or task tracking, e.g. billable work.
- User role configurable windows labels and reports means PBS5 work management can centralise and handle work queues for everyone from your IT department to maintenance.
- Parent/child Work Orders.
- Work Order document tracking.
- Multiple equipment or entity allocation.
- Triggered line item inventory reservation.
- Staged work allocation.
- Costing and ledgers to line item level.
- Triggered constraint, access and priority.
- Full categorization definition.
- Triggered and staged work order status.
- Follow on work order to line item level.
- Work order close actuals versus estimate.
- FMA (Failure Mode Analysis) and RCA (Root Cause Analysis).
- Supports RBM (Risk Based Maintenance) escalation.
- Supports "On Condition" escalation.
- Post Job Work Orders.
- Integrated JSA (Job Safety Assessment) , or
- JSEA (Job Safety Environmental Assessment).
- Risk and hazard assessment integration.
- Completion % to line item.
- Inventory and budgetary constraints with forward chaining approval.
- Integrates with PBS5 Email notification and escalation engine.
- Live integration with MS Project.
- Document linking.
- Timesheets.
- Contractor management.
- Allows Work Requests to be raised using Windows CE Mobile PDA Devices.
- Allows Work Order Task lists to be uploaded and downloaded from PDA Devices.
- Allows Post Job Work Orders to be raised from PDA devices.
- Identify Training and Skills Gaps in resources allocated to work.



Programmed Maintenance

- PM (Programmed Maintenance) has same features as, and works integrally with PBS5 Work Management.
- Calendar driven.
- Meter driven (fixed plan or standard meters).
- Parent/child meter triggers.
- Meter and date driven constraints.
- Float/shuffle – optional.
- Configurable advance deployment.
- Site configurable horizon date.
- Auto server deployment and triggering (service).
- Document linking.

Risk, Safety & Hazard Management

- Identify hazardous Assets, Materials, or Work Procedures in job administration.
- Integrates work, and hazard control documentation.
- Integrates skills auditing with job control.
- PBS5 allows a hazard and risk assessment to be made against any entity in the business structure. Risk assessments can also be made against hazardous goods, or work procedures.
- Risk assessments allow mitigation information to be associated with, and alerted to whenever the work management system identifies a Work Order has been raised against, or near a dangerous asset or area.
- Risk register conforms to AS/NZS 4360:1999.
- The risk assessment module works closely with the work management system, providing an efficient and integrated JSA/JSEA (Job Safety & Environmental Assessment) system.
- Once hazards are identified against assets, areas, business units, inventory, or specific work procedures, the system will print an appropriate JSA relevant to the work being performed automatically with the Work Order.
- The ability to log hazard assessments for future use, without having to start from scratch whenever a hazard assessment is needed for a new job is a major time saver in implementing, and on going administration of a useable JSA system.
- Hazards/Risk/Work/Documents all tie smoothly together to provide robust Risk and Work Management.

Incidents

PBS5 is designed to handle many different type of incidents, requiring different data stored against them, different business rules, and different escalation rules.

- Supports incidents of many types. E.g. Safety / Environmental / Quality / Motor Vehicle.
- New incident types can be created on the fly. Custom incident types are managed and stored in a local repository, such that upgrades of the core system do not affect customized modules.
- All screen labels configurable, compulsory nature of certain fields all user definable against the user group/role.
- User role security. Windows fields button, reports, queries and even language are all user groups dependent. Certain user roles only allow to raise certain types of incidents etc.
- As with all areas of PBS5, Email notification and escalation is configurable and triggerable on any data condition, including elapsed time from previous escalation. Escalation hierarchies for specific matters can be user defined in the system, and used to escalate notification.
- Links to Work Requests, and the entire PBS5 work management system. An incident can be linked to many work orders, or work requests providing a complete action audit trail when used with our Work Management modules.
- PBS5 document management allows documents to be attached (in multiple languages) against any record in the system (incident / injury / work request / witness statements etc.)
- Links to PBS5 Risk Management module, via linking to Hazards.
- Incidents are logged against a business entity (Asset, Area etc) in the business structure hierarchy, so that reporting can occur below any level in the organization, providing hierarchical reporting of data from any point in the business structure model.
- An incident may ; be of multiple types ; be associated with other incidents; have many contributing factors ; have multiple consequences ; involve multiple damaging energies (for safety type incidents) ; have many witness statements can be linked to an incident ; have many illness cases logged against it ; have many medical treatments ; have multiple root causes ; be associated with many hazards ; require Stakeholders to be notified.

Document Management

PBS5 Features a comprehensive multi language document management system which allows documents to be attached to any record in the database.

- PBS5 HyperGraphica® allows a graphical asset register, and document register to be built providing a visual basis for associating documents.
- The work management system works in with documents, allowing critical documents relating, to assets, hazards or even specific work procedures to print automatically with a work order.
- Version control of documents. Revisions and links to superseded documents all maintained.
- As documents are a class of entity in PBS5, non conformances, or change requests may be logged as a work request against a "Document", making identification of the document accurate, and simple.
- Multiple language versions of the same documents can be stored. As a user logs on the system will provide all screens, data, and documents in the native language of the logged on user.
- Documents can be emailed as part of any notification workflow in the system.
- Document review dates can trigger, and escalate notification to interested parties or stakeholders.

Skills and Training Management

- Identify skills employees bring to the business.
- Identify skills required by the business.
- Manage employee training.
- Users are allocated to one or more Resource Groups, and are assigned existing skills and their expiry dates.
- A skills audit report identifies which people are in "jobs" where their skills do not match those required for the Resource Group, or whose skills or certificates have expired.
- Training courses, certificates, qualifications, and recognized skills are registered against a person together with expiry dates etc.
- Skills gap audits can be conducted at the Business level, Department level, Resource Group, or Job level.
- Documents can be linked to Personnel, Job Designs, Training Courses or Skills.
- Documents can be HTTP links or Web Sites linking to appropriate Training Courses registered in the PBS5 system.

Matter & Workflow Management

- PBS5 Features a Notification and Escalation Workflow Matter Engine (NEWME).
- The NEWME allows triggers on any data condition to be set up, which upon meeting the trigger conditions, will initiate a stateless workflow matter engine which can raise "matters", monitor response, and notify individuals that they have "matters" to attend to.
- On entering the matter number into the system, the user will be taken to the appropriate window where their matter can be addressed.
- The NEWME matters can be made to auto escalate, if they haven't been addressed in a specified time period.
- Matter escalation allows items such as approvals, and authorizations to be escalated up a business organizational hierarchy.
- Stakeholders in particular Roles in the business can be defined, and notified collectively of matters.

Purchasing

- Purchase Order supports multi-business unit.
- Purchase Order status control.
- Purchase Order service or inventory.
- Purchase Requests with full approval forward changing & authorization.
- Email interface for inventory deliver, reservation, escalation & approval.
- Document linking.

Inventory

- Optional open and closed store.
- Multi-business unit.
- Multi-store.
- Multi-location.
- N levels of BOM/assemblies (with criticality).
- Colloquial names.
- N levels of categorization.
- Book In.
- Book Out.
- Stock Take.
- Inventory Transfer.
- Complete movement history.
- ABC categorization.
- Tagged Rotables.
- Hazardous and perishable goods etc.

Legacy Application & Customisation

PBS5 is a unique application in that it is almost entirely "generated" by the PBS5 Code Generation environment. The generated nature of PBS5 gives it a very consistent, standard and robust interface, but most importantly abstracts the business programmer from having to deal with low level code.

The PBS5 application is in fact stored as "meta data" in the database itself, and is partitioned into "Core" components which are upgraded with the system, and "Custom" components which remain with the customer.

Many businesses gain competitive advantage through carrying out strategic value creating activities better than their competitors- which is why often specialized applications appear on sites otherwise dominated by large ERP systems. Large ERP systems cannot economically absorb all in-house, or custom "miniapps. PBS5 can be rapidly customized to handle these niche requirements, and hence presents an opportunity to re-engineer all your MS Access™ apps, Excel™ etc. apps into a standard SQL application which interoperates with other PBS5 modules, is stored in a centralized database, and follows all the security, language and other standards of PBS5. Integrated security, and infrastructure will give your re-developed mini-apps corporate strength, and deploy- ability.

Integration with SAP, or other legacy systems allows custom configuration of front ends in any language to existing financial, and other ERP back ends.

Talk to us about how PBS5 can standardise your in-house developed desktop apps.

Database Tools

- Integrated database tools.
- Automatically maintains concurrency between current version and database definition.
- A DBA is not required whenever the system is upgraded from version to version.
- View maintenance – normalized data is converted into views for ease of reporting.
- Windows data dictionary to assist with reporting with joining and label information.
- Database privilege tool.

Security

- Window & report level security, down to object level (buttons & fields), for each user group.
- User group assignable queries – refer to queries.
- User group assignable compulsory fields.
- User group data range restrictions for lookups. System administrators can limit the range of data available to specific user groups.

Email Notification and Escalation

- Trigger conditions can be user defined and stored as data - independent of upgrades.
- Notifications are based on configurable triggered conditions.
- Any number of escalation hierarchies can be defined for any number of notification classes.
- Notification methods are defined as procedural code, allowing a high level of flexibility of what action can be required of the system once a trigger is executed.

Integrated Reporting Environment

- Features an internal report writer.
- Custom Reports remain in a local repository, unaffected by system upgrades.
- PBS5 Internal Reports support all PBS5 TransLingual™ language capabilities.
- Open system allows integration with third party report writers.

Windows and Report Queries

- Any number of user definable queries for any window or report.
- No SQL expertise required.
- Queries can incorporate prompts, and distinct lists to make searching easy and to work smoothly with specific work flows.
- User group assignable.

Standard Window Functions

- Each window and report has user definable query wizard capability.
- All windows are standardized - compulsory fields are red, prompted fields are blue and optional fields are black.
- All the buttons that operate the windows are standardized.
- The total look and feel of PBS5 is standardized.

Custom Modules and Components

- Future upgrades are not compromised by custom modules, queries, reports, searches, windows, workflows etc.
- The PBS5 application itself resides in data, and is partitioned into core and custom components.
- Custom components remain in the customers' database, and most importantly the customer does not pay a penalty for having custom components. Future upgrades are not compromised by custom code.
- All lookup lists are configurable.

PDA Mobile Computing Device Support

Various Work Request and Work/Task management functions are available from Wireless PDA devices.



Specifications

Deployment Methods

- Thick Client- local machine (Client Server).
- Thin Client - intra/internet via Terminal Server/Citrix based deployment.
- Thin Client- Web browser based deployment
- Windows CE mobile devices

Operating Systems

- Windows variants.
- Mac OSX.
- Unix – Linux & Solaris.

Databases

- IBM DB2.
- MS SQL Server.
- Oracle.
- Any ANSI 97 compliant database - must support aliasing, views and referential integrity.

Middle Tier Deployment

- Interfaceless communications, escalation and logic layer allowing for database independent logic and triggers.
- IBM MQ interface can be incorporated within middle layer for communications to other systems.

Languages

- European languages (including Russia and former Soviet Union Cyrillic characters)
- Asian languages.

Version Control

- Automatically maintains concurrency between current version and database definition.
- A DBA is not required whenever the system is upgraded from version to version.

Windowing

Multiple windows can be opened at the same time for power users, for example the Work Order window can be opened multiple times.

Fonts and Standards

All fonts, styles and sizes are centrally controlled - allows one to change the fonts, colors and sizes for the system.

Integration

- SAP.
- MQ series embedded within Middle-Tier.
- SQL replication or batch load methods.
- Active X.
- Email.
- SQL Data level integration.

Summary

PBS5 is a complete Translingual application to be used as a fully integrated Enterprise Asset Management system, or as discrete modules.

PBS5s' delivers a proven track record, of business returns, engineering administration and decision support within an innovative visually driven environment. PBS5 is designed to address business issues within a holistic asset management lifecycle that has proven capacity in enterprise maintenance or asset management.

PBS5's unique integrated, easy to use, visual drill down plant and asset register can include any graphical information such as, plant and asset drawings, process diagrams, safety instructions, or context rich information. PBS5's graphical interface Visually drives the focus of powerful modules with little requirement for understanding complex asset or area naming conventions. PBS5's Visual interface can link to other systems.

PBS5 functions include work request, programmed maintenance, cost analysis, multiple business structure model, work, inventory, contractor, safety, risk and document management - suited to the management of large to medium mining, paper, civil, utilities, energy, gaming, complex engineering, food or fleet facilities. Fully integrated modules may be activated as required, providing for phased implementation.



PBS5 or Paradigm Business Systems version 5 is designed to be a holistic asset management system that reduces cost of ownership and leverages efforts through a number of mechanisms that are available through an integrated system. As the name implies it is about business, which is more than simply costs, it is about all the moving parts and its reliable delivery. PBS5 has grown from focusing on core business returns, specifically for engineering service industry and Asset management.

What is most reassuring about PBS5 is that it is designed to grow and wrap itself around the business it serves, making it capable of delivering further value not otherwise possible.

Want to know more?

Please contact Paradigm for a distributor in your region.

Paradigm Designs Software

Suite 2, 1 Redland Drive
Mitcham, Victoria 3132
AUSTRALIA
t. +61 3 9872 3533
f. +61 3 9872 6135

www.parasoft.com.au
info@parasoft.com.au

HyperGraphica® is a registered trademark and PBS5 and PBS5 TransLingual™ are trademarks of Paradigm Designs Software Pty Ltd

© 2005 Paradigm Designs Software Pty Ltd

